



Martin Tucker



James Lawton



Phoebe Pine



Dean Gore



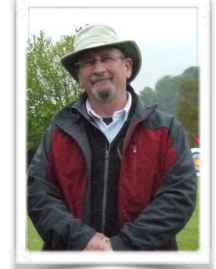
Dan Gill



Helen Healey



Caroline A'Bear



Andy Cramb



Steve Mason



Graham Kent



Katherine Frusher



Chloe Tucker

Club Coaches Our Crown Jewels!

Our volunteer coaches are fundamental to our success. Together they have a tremendous range and depth of skills and experience and support the club's mission: helping everyone to achieve their full potential, whatever that might be. All practice sessions are supported by coaches, as well as our improvement workshops. Almost 15% of our membership are currently qualified coaches.

We also bring in skilled external coaches to support the development of both our coaches and our archers, as well as a sports psychologist and a fitness and conditioning coaches.

Many of our young archers have gained their Level 1 coaching qualification. They have continued to coach archery even when they have left us for University. Other young archers have supported the club's work as 'Coach Assistants' at community sessions, 'Bambies' events and after school clubs.

On average we aim to run at least one level 1 coaching course every year for 12 candidates, for our members who wish to join our coaching team and for archers from other Gloucestershire clubs & organisations.

Coaching support is accessed by:

- Asking for help at any practice session.
- Attending advertised workshops.
- Approaching a specific coach to support you.

If readers know someone who would like to become a coach, or assist from time to time, then just let us know. It is a rewarding challenge!

We have coaches with the skills to support:

- Archers of all levels from beginners to performance archers at national and international level.
- All bow types and forms.
- Specific groups and settings - young people, community, people with a range of disabilities etc.



Peter Pawley



Steph Gill



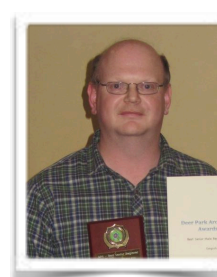
Dave Sandles



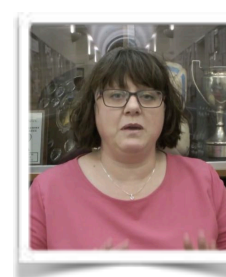
Vanessa Crang



Paige Tucker



Peter Sisson



Kay Chappell



Lee Jones



Roger Crang



Tom Howse



Jim Rowley



Brian Gill



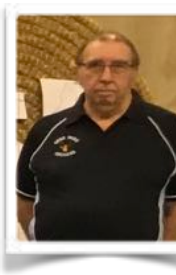
Callum Fraser



Andy Melling



Martin McKay



Bob Worcester



Nathan Windle



Chloe Hitchings

Deer Park Archers Limited (By Guarantee)
 23 Jenner Close, Hucclecote, Gloucester, GL3
 3DZ
 Company Registration Number: 9044411
www.deerparkarchers.co.uk

Our coaches are a valuable resource, all members are expected to help with range assembly & take down. Likewise with Field Captaincy and any other duties at practice sessions. Also please respect that they are all volunteers and archers, so respect their space if they are shooting.

L2 Coaching Courses (1 recently completed and 1 about to!)

- 6 - 9 days of classroom teaching.
- Written Assignments, mentoring, detailed coaching plans and observed coaching, assessment session.
- Cost £400

Jan 2017 - Currently on a L1 Coaching Course

- 3 days of practical/classroom work.
- Minimum of 12 hours supported coaching.
- Mentoring sessions, written assignments, child protection workshop and assessment session.

Cost currently £260



Ella
Gibson



Graham
Peters



Jessica
Diamond



Aleesha
Keddie
Awaiting
Photo